



EPAL STATISTICS



Monitoring the production
and repair of EPAL pallets,
with a focus on Italy,
from 1995 to 2021



conlogno
consorzio servizi legno sughero

Produced by EPAL Italia | Source: data provided by Epal International

COUNTRIES AND HISTORY

Production
of EPAL 1
pallets
(800x1200
mm)
around the
world
in 2021
(pieces)

Total
Production
101,343,915

TOP 5 PRODUCERS 2021

Germany **35,903,285**

Poland **31,315,750**

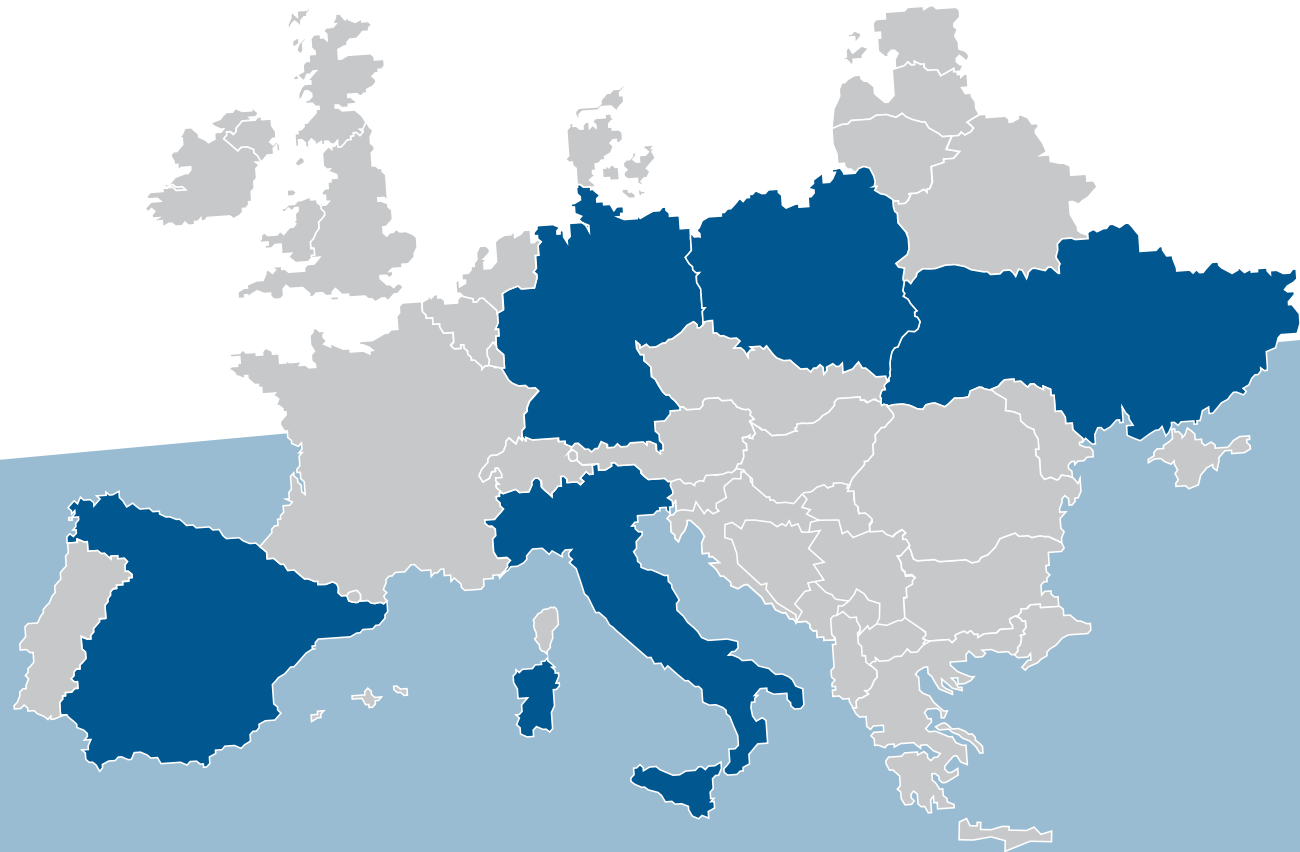
Italy **7,470,725**

Ukraine **6,035,168**

Spain **2,365,761**

The top 5 countries
account for **81.9%**
of total production

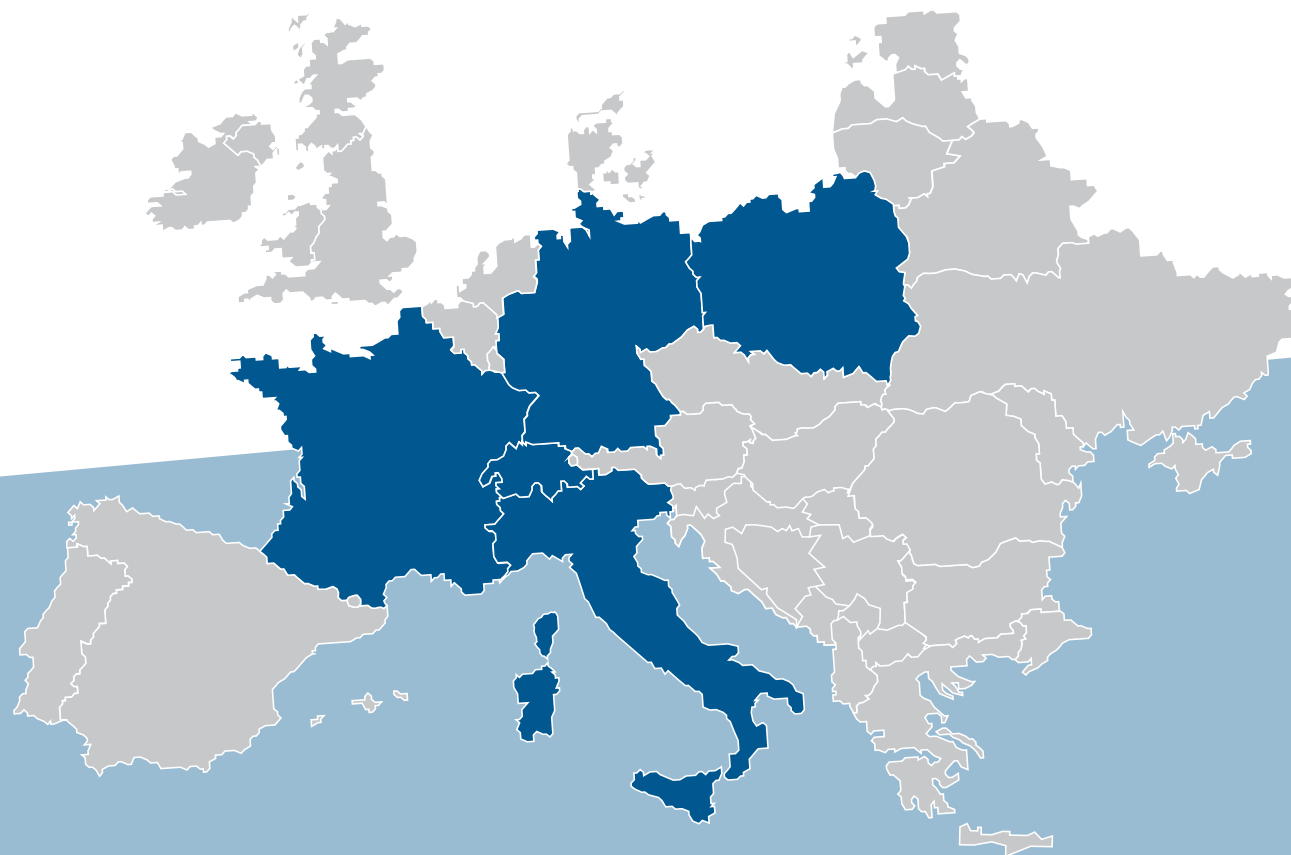
Between 2020 and 2021,
total production of EPAL
pallets increased **5.4%**



COUNTRIES AND HISTORY

The top 5 countries account for **82.7%** of total repairs

Between 2020 and 2021, total repairs of EPAL pallets increased **7.5%**



TOP 5 REPAIRERS 2021

Germany **10,522,603**

Italy **4,723,452**

France **3,034,896**

Poland **2,995,448**

Switzerland **1,736,251**



Repair of
EPAL pallets
in all
countries
in 2021
(pieces)



Total
Repairs
27,817,048

Germany **47,144,788**

Poland **34,761,269**

Italy **12,309,308**

Ukraine **6,075,270**

France **4,456,972**

The top 5 countries for production and repair of all types of EPAL products (all products)



Production
& Repair
of EPAL
pallets in all
countries
in 2021
(pieces)

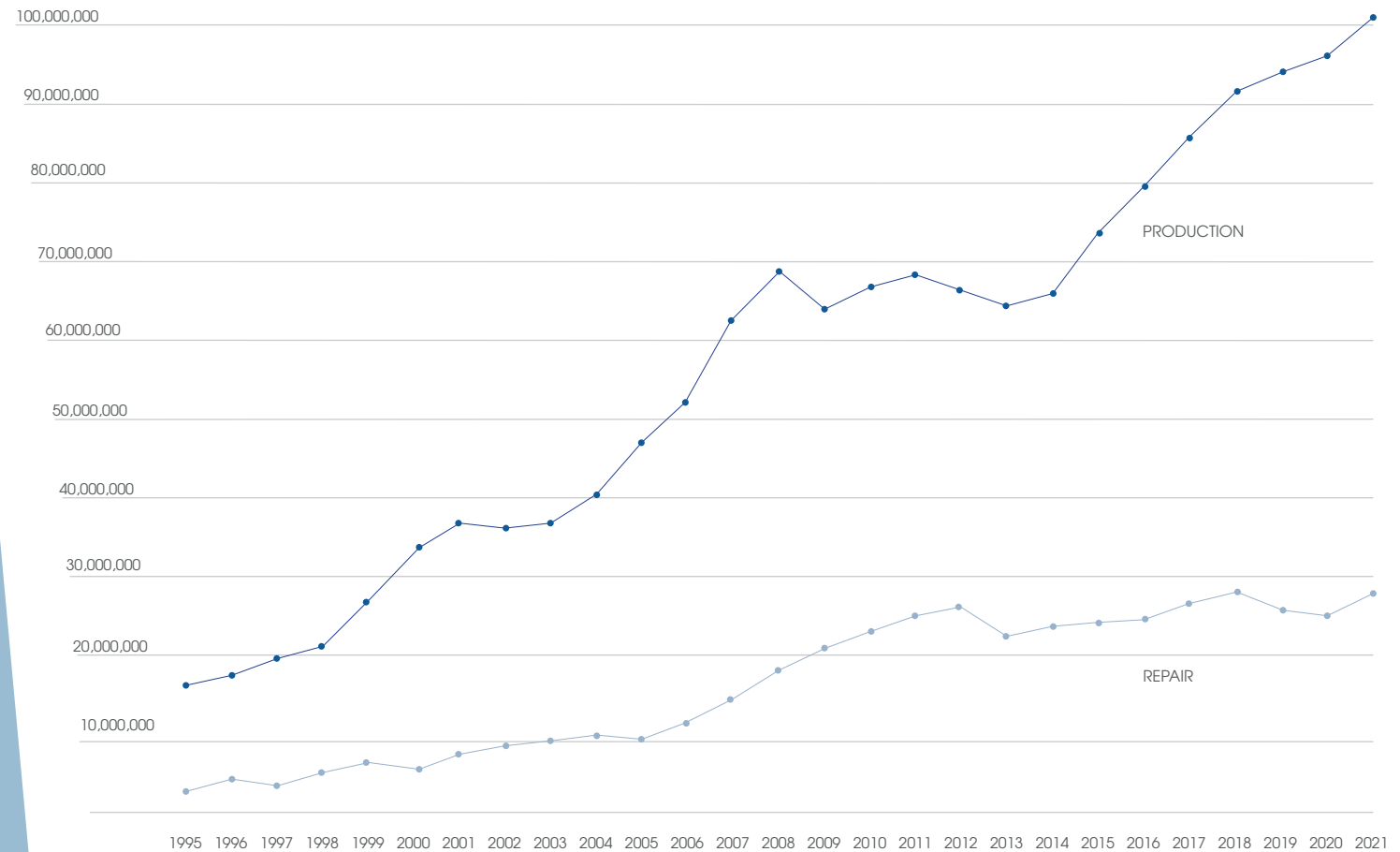


COUNTRIES
AND
HISTORY

EPAL production and repair data in all countries from 1995 to 2021 (pieces)

Since 1995, total production of EPAL pallets has grown **570%**
 Since 1995, total repairs of EPAL pallets has grown **868%**

Year	Production	Repair
1995	15,117,331	2,870,800
1996	17,001,616	4,662,821
1997	19,916,485	3,994,618
1998	21,616,174	6,169,117
1999	27,853,524	7,252,339
2000	34,453,188	6,908,362
2001	36,180,450	8,534,535
2002	36,312,542	9,315,670
2003	37,250,607	9,567,310
2004	40,186,000	9,958,000
2005	47,303,000	9,878,000
2006	52,168,000	10,993,000
2007	62,599,055	13,944,249
2008	68,480,694	18,112,714
2009	62,619,067	20,565,002
2010	66,900,763	22,960,163
2011	68,342,713	24,666,580
2012	66,755,969	25,638,834
2013	64,518,254	22,653,844
2014	66,364,226	23,470,091
2015	73,895,888	24,057,620
2016	79,487,291	24,971,238
2017	87,567,292	27,482,264
2018	92,898,836	27,416,541
2019	94,687,134	26,835,449
2020	96,077,020	25,855,265
2021	101,343,915	27,817,048



PRODUCTION (pieces)



Italy accounts for **7.3%** of total European EPAL pallet production

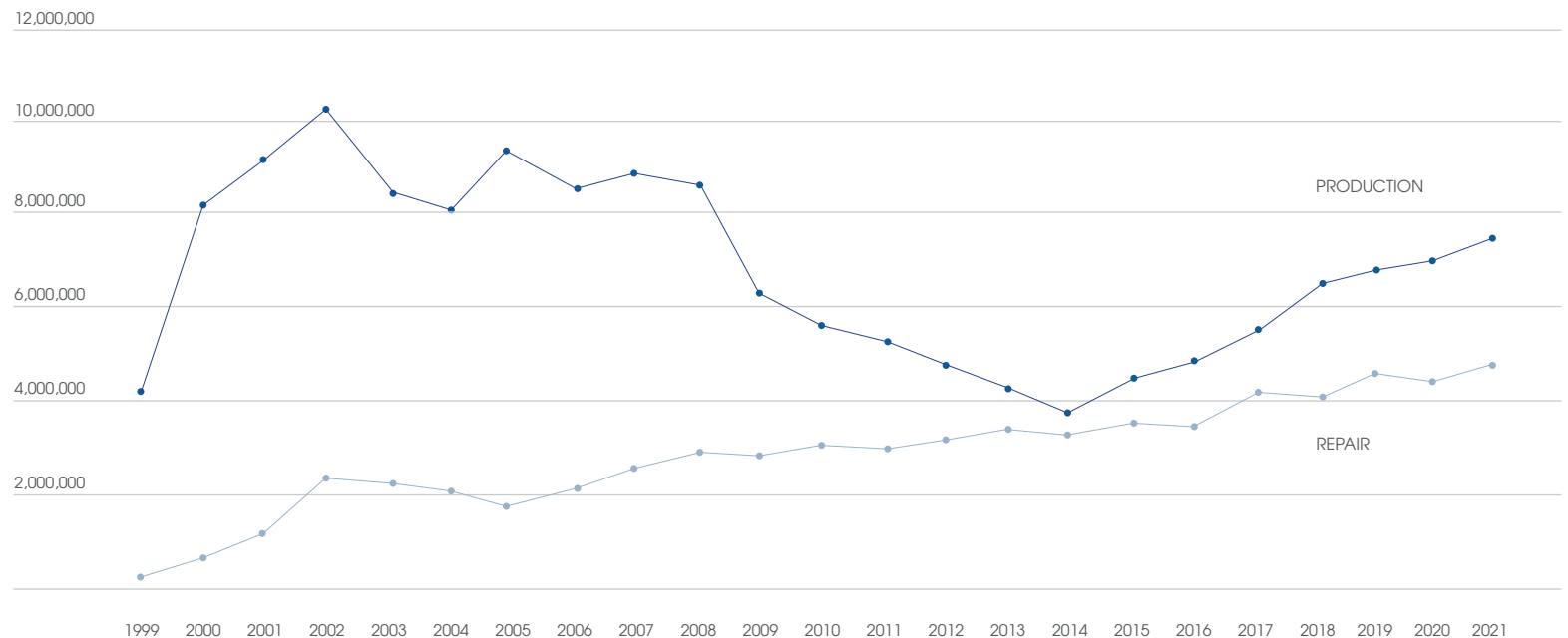
YEAR 2021

Italy accounts for **17%** of total European EPAL pallet production



REPAIR (pieces)

Year	Production	Repair
1999	4,239,145	65,926
2000	8,222,348	435,484
2001	9,238,851	1,203,532
2002	10,258,342	2,315,377
2003	8,394,352	2,217,160
2004	8,037,267	2,070,964
2005	9,286,261	1,900,907
2006	8,522,683	2,140,212
2007	8,953,042	2,416,469
2008	8,670,663	2,974,201
2009	6,362,528	2,900,912
2010	5,888,393	3,122,712
2011	5,769,694	3,099,763
2012	4,924,946	3,296,376
2013	4,267,541	3,505,556
2014	3,843,849	3,310,453
2015	4,536,352	3,655,425
2016	5,116,442	3,628,420
2017	5,820,182	4,107,129
2018	6,526,210	4,091,421
2019	6,785,228	4,371,993
2020	6,872,900	4,338,574
2021	7,470,725	4,723,452



ITALY FOCUS

Number of EPAL licenses in Italy

More than 25
years of data
1995 - 2021

Year	Producer licenses	Repair licenses
1999	54	18
2000	56	59
2001	58	120
2002	60	133
2003	49	124
2004	45	126
2005	49	120
2006	39	121
2007	47	118
2008	52	129
2009	53	127
2010	47	127
2011	49	139
2012	45	134
2013	44	134
2014	40	120
2015	40	140
2016	40	153
2017	40	171
2018	41	181
2019	41	178
2020	39	178
2021	40	192



epal.conlegno.eu

Since 1999, the no. of producer licenses has decreased **-25%**

Since 1999, the no. of repair licenses has increased **966%**