



Australian Government

Australian Quarantine
and Inspection Service

DEPARTMENT OF AGRICULTURE, FISHERIES AND FORESTRY

Non-commodity Information Requirements Policy

Author: Import Clearance

Date: March 2009

Version: 1.1

Status: Final

Classification: Unclassified

FOR IMPLEMENTATION FROM AUGUST

TABLE OF CONTENTS

INTRODUCTION..... 3

1 PURPOSE 3

2 BACKGROUND..... 3

3 CRITICAL OUTCOME/S 4

CONSULTATION..... 5

4 INITIAL POLICY DEVELOPMENT 5

5 NATIONAL AQIS CONSULTATION..... 5

6 INDUSTRY CONSULTATION 5

7 FINAL ENDORSEMENT 5

POLICY 6

8 DEFINITIONS 6

9 INFORMATION REQUIREMENTS – NON-COMMODITY CONCERNS..... 8

10 CARGO TYPES EXEMPT FROM STANDARD NON-COMMODITY INFORMATION REQUIREMENTS 8

11 CARGO TYPES - RURAL DESTINATION CONCERNS ONLY 9

12 NON-COMMODITY CONCERN STATEMENTS (CONTAINERS)..... 10

13 NON-COMMODITY CONCERN STATEMENTS (PACKAGING MATERIALS)..... 11

14 NON-COMMODITY CONCERNS (SOURCE/DESTINATION) 13

15 REPORTING 13

16 MONITORING..... 13

17 OTHER CONSIDERATIONS 14

ATTACHMENTS..... 15

INTRODUCTION

1 PURPOSE

The purpose of this document is to define the information requirements which must be met to support assessment of non-commodity concerns associated with imported cargo only.

The policies supporting AQIS intervention on shipping containers under the Giant African Snail National Co-ordination Centre activities, the External Container Inspection Regime and the Empty Container Scheme are not within the scope of this policy.

2 BACKGROUND

AQIS assesses the quarantine risk posed by imported cargo from two main perspectives – commodity and non-commodity concerns. Where commodity concerns represent the inherent likelihood of those goods introducing an exotic pest or disease to Australia, non-commodity concerns consider the transportation pathways and packaging amongst other factors in determining the level of quarantine risk posed. In line with longstanding AQIS policy, it is preferred that quarantine risk be managed prior to importation wherever possible. The subject of this policy is the required information and supporting documentation or certification to give AQIS confidence that these measures have been applied. Although information is not routinely required for assessment for some cargo types, compliance with import requirements for non-commodity concerns remains the importer's responsibility. For example, all timber packaging and dunnage remains subject to mandatory treatment requirements irrespective of whether timber packaging statements are routinely required for the applicable cargo type.

As non-commodity concerns relate primarily to packaging and transportation issues, AQIS has standard information requirements that must be met for each non-commodity concern. AQIS is mindful that differing cargo types (such as air versus sea cargo and containerised versus break bulk) are dealt with in different ways on arrival in Australia. As this allows non-commodity concerns to be dealt with in different ways, AQIS delineates its information requirements by cargo type to ensure that only the information essential for assessment is provided.

This document outlines:

- a) Standard non-commodity concerns;
- b) Information required in relation to each of the standard non-commodity concerns;
- c) Standard non-commodity concerns to be addressed by each cargo type.

This document forms the basis of an AQIS officer's assessment of non-commodity concerns for imported cargo and replaces much of the longstanding publication "Cargo Containers: Quarantine Aspects and Procedures" (commonly referred to as the Cargo Containers Booklet). It is also the technical reference that informs Customs Brokers in their assessments of non-commodity concerns under the Broker Accreditation Schemes.

3 CRITICAL OUTCOME/S

The critical outcomes from the formulation of the non-commodity policy and requirements are as follows:

- 1) Provide parameters to support AQIS officers in determining the level of non-commodity based quarantine risk posed by an imported consignment and the appropriate level of intervention to be applied;
- 2) Define information requirements to support AQIS officers in determining the level of non-commodity based quarantine risk posed by an imported consignment; and
- 3) Define the parameters for acceptability of the information presented for non-commodity assessment.

FOR IMPLEMENTATION 1 AUGUST 2009

CONSULTATION

4 INITIAL POLICY DEVELOPMENT

This document has been distributed internally for comment within Import Clearance and the Stakeholder Programs.

5 NATIONAL AQIS CONSULTATION

This document has been distributed for comment through the Documentary Assessment Working Group (a national forum of entry processing officers) and throughout the AQIS regional network for comment.

6 INDUSTRY CONSULTATION

This document has been distributed to industry for comment through the AQIS/Industry Cargo Consultative Committee Secretariat has been revised on the basis of comment provided. The final document has been endorsed by the AQIS/Industry Cargo Consultative Committee Secretariat.

7 FINAL ENDORSEMENT

This document has been endorsed by the Program Manager, Import Clearance and the National Manager, Cargo Management and Shipping.

FOR IMPLEMENTATION 1 AUGUST 2009

POLICY

8 DEFINITIONS

Term	Definition
AQIS GAS Target Country	Countries identified by AQIS from which goods pose a risk of introducing giant African snails. This list is on the AQIS website at http://www.daffa.gov.au/aqis/import/cargo/pests/gas .
Bark	Bark is the external natural growth layer covering trees and branches. It is prone to attack from pests and pathogens that may be of quarantine concern.
Break Bulk	Cargo transported by sea but not in a shipping container nor bulk in hold. Typical break bulk cargoes include machinery, vehicles and timber.
Bulk (in hold)	Non containerised cargo transported loose within the holds of ships designed for this purpose, eg. grain or fertiliser.
Competent Authority	Official service or authority, established by the government of an exporting state, having the responsibility and competence for ensuring or supervising the implementation of animal or plant health standards.
Dunnage	Dunnage is material used to support or stabilise a consignment during transport which is not attached to or forming part of the consignment. Examples of dunnage include but are not limited to used tyres, drums, gluts and skids.
Exposed/Exposure	In relation to infestable agricultural products, “exposure” is taken to mean packaged in a way that does not prevent insect infestation, i.e. not in insect proof packaging.
FCL	Full Container Load (Single Supplier – Single Importer)
FCX	Full Container Load (Multiple Suppliers – Single Importer)
GAS Rate	The dosage of methyl bromide applied as fumigant in order to address giant African snail infestation, being 128g/m ³ for 24 hours at 21°C.
Hard Frozen Consignments	Consignments of goods which have been continuously maintained at -18°C (0°F) or below for a period of at least seven days.
Infestable	In relation to infestable agricultural products, “infestable” means not processed in a way that eliminates insect infestation. Additionally, those inherently infestable agricultural products which remain “exposed” after processing are deemed “infestable”.
Inherently Infestable Agricultural Products	Raw or semi-processed agricultural products that have not been treated in a way that addresses insect infestation in their manufacture or production. This class of goods is taken to broadly include: <ul style="list-style-type: none"> ➤ Herbs and Spices ➤ Seeds (including nuts) ➤ Plant gums and resins (except those chemically extracted) ➤ Meals and Flours of plant origin ➤ Dried Fruits ➤ Dried vegetables excluding freeze dried vacuum packed goods ➤ Unprocessed agricultural products excluding fresh fruits and vegetables
Insect Proof Packaging	Sealed air-tight packaging. Examples of insect proof packaging include: <ul style="list-style-type: none"> ➤ Vacuum packs ➤ Hermetically sealed cans and jars ➤ Sealed gas flushed plastic bags

NON-COMMODITY INFORMATION REQUIREMENTS POLICY

ISO Tanker	Steel cylindrical containers mounted in a rigid steel framework used to carry bulk liquids or chemicals. Also called Tank Containers and Tanktainers.
ISPM 15	International Standards for Phytosanitary Measures No. 15 – <i>Guidelines for Regulating Wood Packaging Material in International Trade</i>
Khapra Country	Countries identified by AQIS from which goods pose a risk of introducing khapra beetle. This list is on the AQIS website at http://www.daffa.gov.au/aqis/import/cargo/pests/khapra-beetle .
Khapra Rate	The dosage of methyl bromide applied as fumigant in order to address khapra beetle infestation, being 80g/m ³ for 48 hours at 21°C.
LCL	Less than a Container Load
Non-Infestable Agricultural Products	<p>Agricultural products which are inherently unlikely to be infested by insects or those that have been treated in a way that would eliminate insect infestation during production and maintained that way through to being packaged in a way which prevents “ exposure”.</p> <p>Inherently non-infestable agricultural products include:</p> <ul style="list-style-type: none"> ➤ Black and Green Teas ➤ Herbal Teas (in tea bags) ➤ Cocoa Products ➤ Rubber ➤ Cork ➤ Potato Starch ➤ Pyrethrum ➤ Soybean Concentrate ➤ Tapioca Starch ➤ Textiles ➤ Textured Vegetable Proteins
Prohibited Packaging Material	<p>All packaging material other than those permitted in the ICON case listings:</p> <ul style="list-style-type: none"> ➤ ‘Packing materials for general use’; and ➤ ‘Packing materials for the packaging of plants’.
Reconstituted Wood Products	Wood products that as a result of the manufacturing process no longer contain solid wood including particleboard, chipboard, masonite, oriented strand board, medium and high density fibreboard.
Reefer	A reefer is a temperature controlled container used in intermodal freight transportation of temperature sensitive cargo.
Ships’ Stores	Inventory carried on board a vessel/aircraft to meet its daily requirements, such as food, water, cleaning supplies, medical and safety supplies and spare parts. This may also include such goods being transhipped from one vessel to another which are held ‘under bond’.
Timber Packaging	<p>Timber packaging is all solid timber and plywood, or articles made thereof, used to support, secure or protect a consignment that constitute a part of the consignment (i.e. attached to the consignment).</p> <p>Examples of packaging include but are not limited to pallets, crating, packaging blocks, drums, cases, load boards, pallet collars, gluts, stickering (spaces placed between layers of timber to allow effective fumigation) and skids.</p>
Transhipment	Goods discharged from a vessel into an Australian port and held under bond with the express purpose of being exported on another vessel.

9 INFORMATION REQUIREMENTS – NON-COMMODITY CONCERNS

The below table indicates which non-commodity concerns must be addressed for each specific cargo type:

Cargo Type	Container Concerns		Packaging Concerns				Source/Destination Concerns	
	Cleanliness Statement	Wall Lining ¹	Prohibited Packaging Material Statement	Timber Statement	ISPM 15 Statement or Treatment Certificate (if timber declared)	Bark Statement (if timber declared)	Unpack Destination	Giant African Snail Cargo
Transshipment ²	N	N	N	N	N	N	N	N
Personal Effects	N	N	N	N	N	N	N	N
Airfreight	N	N	N	N	N	N	N	N
Bulk (in hold)	N	N	N	N	N	N	N	N
ISO Tank	N	N	N	N	N	N	Y	N
Hard Frozen Container	N	N	N	N	N	N	Y	N
Break Bulk	N	N	N	N	N	N	N	Y
FCL/X	Y	Y	Y	Y	Y	Y	Y	Y
LCL	N	N	Y	Y	Y	Y	N	Y

1 - Wall Lining Concerns relate only to FCL/FCXs of exposed infestable agricultural products

2 - Transshipments does not include ships' stores to be used on cruise vessels

Note: Grey shading indicates being outside the scope of the Broker Accreditation Schemes

10 CARGO TYPES EXEMPT FROM STANDARD NON-COMMODITY INFORMATION REQUIREMENTS

TRANSHIPMENT OF CARGO

Cargo that is being transhipped, other than ships' stores to be used on cruise vessels, is exempt from all non-commodity information requirements. Consignments of ships' stores to be used on cruise vessels are subject to mandatory reporting to AQIS and are required to meet all non-commodity information requirements relating to the applicable cargo type.

AQIS ACTION IN RELATION TO TRANSHIPMENTS

As transshipments (other than ships' stores) are not routinely reported to AQIS, no action is taken in relation to these cargoes.

PERSONAL EFFECTS CONSIGNMENTS

Personal effects are exempt from standard non-commodity information requirements due to commodity specific clearance processes.

AQIS ACTION IN RELATION TO PERSONAL EFFECTS CONSIGNMENTS

Consignments must be identified as personal effects in the ICS and are subject to mandatory referral to AQIS for clearance purposes.

AIR FREIGHT CONSIGNMENTS

Air freight consignments are exempt from standard non-commodity information requirements as surveys have indicated that non-commodity concerns are minimal within this class of cargo.

AQIS ACTION IN RELATION TO AIR FREIGHT CONSIGNMENTS

Non-commodity concerns relating to air freight consignments are addressed through ongoing surveillance of air freight facilities and are addressed on a case-by-case basis.

BREAK BULK CONSIGNMENTS

Break bulk consignments are exempt from standard non-commodity information requirements other than being assessed for GAS cargo concerns.

AQIS ACTION IN RELATION TO BREAK BULK CONSIGNMENTS

Non-commodity concerns relating to break bulk consignments are addressed through ongoing surveillance of port facilities and are addressed on a case-by-case basis.

Break bulk cargo imported from countries on the AQIS GAS Target Country List are identified for AQIS intervention through the same processes as shipping containers imported from these countries.

BULK (IN HOLD) CARGO

Bulk (in hold) consignments subject to quarantine intervention require a Ship Cleanliness Certificate and/or Ship Surveyor's Inspection Report attesting to the cleanliness of the hold/s prior to loading.

AQIS ACTION IN RELATION TO BULK (IN HOLD) CONSIGNMENTS

Where bulk (in hold) cargo requires a Ship Cleanliness Certificate and/or Ship Surveyor's Inspection Report and one cannot be presented, the cargo may be refused discharge or may be subject to increased intervention including sampling, inspection, treatment or export.

11 CARGO TYPES - RURAL DESTINATION CONCERNS ONLY**BULK LIQUID CONTAINERS (ISO TANKERS/TANK CONTAINERS)**

While all ISO Tankers are considered by AQIS to be FCL consignments, they are exempt from packing declaration, cleanliness statements and GAS cargo requirements due to their restricted usage, design and construction. Only rural destination concerns are considered in relation to ISO Tankers.

ISO Tank containers must be identified as such on the Bill of Lading with a statement to that effect (this may also be represented by the international standard codes as per ISO 6346).

AQIS ACTION IN RELATION TO BULK LIQUID CONTAINERS

Consignments not covered by an acceptable indication of the container being an ISO Tank (Tank Container) on the Bill of Lading, may be directed for inspection to confirm that the container is an ISO Tank.

HARD FROZEN CONTAINERS

Refrigerated containers (reefers) containing cargo that is hard frozen may be granted exemption from packaging statements, cleanliness statements and GAS cargo requirements. For this exemption to be granted, the temperature must have been continuously maintained at -18°C (0°F) or below for a period of at least seven days.

The hard frozen statement must read as follows:

"The goods packed in the container(s) listed on this document, have been continuously maintained at -18°C (0°F) or below for a period of at least seven days".

AQIS will accept this statement on:

- Bill of Lading/Waybill
- Packing List or Invoice
- Government to Government Certification
- Delivery order issued by the relevant shipping company

- Declaration from a Customs Broker accredited under AQIS Broker Accreditation Schemes.

In the absence of a hard frozen statement, an AQIS officer will use the “shipped on board date” on the bill of lading as commencement of the seven-day minimum period. Where the shipping period is less than seven days, additional documentation may be presented which indicates that the consignment was hard frozen prior to the voyage covered by the current bill of lading or post discharge, such as a temperature statement printout from the reefer.

AQIS ACTION IN RELATION TO HARD FROZEN STATEMENTS

Consignments not meeting hard frozen container requirements must meet all non-commodity requirements applicable to the relevant cargo type.

12 NON-COMMODITY CONCERN STATEMENTS (CONTAINERS)

The following outlines the requirements for each non-commodity statement which can be presented to AQIS as part of the import process.

CONTAINER CLEANLINESS STATEMENT

Various cargo types require a statement to be made indicating whether the container has been cleaned prior to loading.

Container cleanliness statement must read as follows:

“The container(s) covered by this document has/have been cleaned and is/are free from material of animal and/or plant origin and soil”

AQIS will accept cleanliness statements on the following documents:

- Cleanliness declaration
- Packing declaration
- Packing List or Invoice

AQIS ACTION IN RELATION TO CONTAINER CLEANLINESS STATEMENTS

FCL/X consignments not covered by an acceptable container cleanliness statement will be directed for inspection of both the container and the cargo transported within it.

WALL LINED CONTAINERS

Wall lined container statements are required for all FCL consignments of exposed infestable agricultural products (see Attachment A). This requirement reflects the risk that commodity residues may be present behind container walls and that cross-contamination could occur between residues behind container walls and exposed infestable agricultural products in transit.

Wall lined container statement must read as follows:

“The container(s) covered by this document is/are unlined”

AQIS will accept wall lined container statements on the following documents:

- Packing declaration
- Cleanliness declaration
- Bill of Lading
- Any other document containing the packing declaration or cleanliness statement (as permitted within this policy)

Where an FCL consignment of exposed infestable agricultural products is in an unlined container, all other FCL non-commodity requirements must be met.

Where an FCL consignment of exposed infestable agricultural products is in a wall lined container, in addition to all other FCL non-commodity requirements the following is required:

a) Khapra Countries

- a treatment certificate for khapra rate fumigation of the container; and
- an official international Phytosanitary certificate for the agricultural produce issued immediately prior to loading with the additional endorsements that it was free from khapra beetle (*Trogoderma granarium* Everts) and was grown in the country issuing the certificate.

b) Non-Khapra Countries

- a treatment certificate for khapra rate fumigation of the container; and
- an official international Phytosanitary certificate for the agricultural produce issued immediately prior to loading with the additional endorsement that the produce was grown in the country issuing the certificate.

AQIS ACTION IN RELATION TO WALL LINED STATEMENTS

Where no wall lined statement is provided for an FCL consignment of exposed infestable agricultural products, the container will be directed for inspection to verify whether it is wall lined.

Where a wall lined container does not have a fumigation certificate and valid phytosanitary certificate:

- All cargo within the container will be directed for inspection and/or treatment; and
- The container will be directed for fumigation at the khapra rate once unpacked.

13 NON-COMMODITY CONCERN STATEMENTS (PACKAGING MATERIALS)

PROHIBITED PACKAGING MATERIAL STATEMENT (SUCH AS STRAW, BAMBOO, PEAT, HAY, CHAFF, USED FRUIT AND VEGETABLE CARTONS ETC)

Various cargo types require a statement indicating whether prohibited packaging material has been used in the packaging of the consignment as indicated at Section 9.

The prohibited packaging material statement must read as follows:

“Have prohibited packaging materials or bamboo products been used as packaging or dunnage in the consignment covered by this document?” Yes/No

AQIS will accept prohibited packaging material statements on the following documents:

- Packing declaration
- Packing List or Invoice

AQIS ACTION IN RELATION TO PROHIBITED PACKAGING MATERIAL STATEMENT

No further action is required for packaging concerns where an acceptable prohibited packaging material statement is provided. In all other instances, consignments will be directed for inspection and/or treatment.

TIMBER PACKAGING/DUNNAGE STATEMENT

Various cargo types require a statement indicating whether timber packaging or dunnage has been used in the packaging of the consignment as indicated at Section 9.

The timber packaging/dunnage statement must read as follows:

“Has timber packaging/dunnage been used in consignments covered by this document?” Yes/No

Note: Reconstituted wood products are not required to be declared as timber packaging or dunnage as they are not considered to pose a quarantine risk.

Where timber packaging/dunnage has been declared within a consignment, the following statements/documents are also required:

1. ISPM 15 statement or a treatment certificate/phytosanitary or government treatment certificate that covers AQIS acceptable treatments (treatment certificates are not accepted for ISPM 15 treatment), and
2. Bark statement.

AQIS will accept timber packaging/dunnage statements on the following documents:

- Packing declaration
- Packing List or Invoice

ISPM 15 STATEMENT

Where timber packaging/dunnage has been declared, AQIS requires a statement indicating whether all the timber packaging/dunnage which has been used is ISPM 15 compliant. It is important to note that ISPM 15 is applicable only to solid timber and is not accepted for plywood or reconstituted wood products. The ISPM 15 statement must read as follows:

"All timber packaging/dunnage used in the consignment has been treated and marked in compliance with ISPM 15." Yes/No

Note: Where an ISPM 15 statement is made indicating that all timber packaging/dunnage used in the consignment has been treated and marked in compliance with ISPM 15, the Timber Packaging/Dunnage Statement will not be required.

AQIS will accept ISPM 15 statements on the following documents:

- Phytosanitary Certificates
- Packing Declarations
- Packing List or Invoice

BARK STATEMENT

Where timber packaging/dunnage has been declared, including ISPM 15, AQIS requires a statement indicating whether the timber packaging/dunnage is free from bark.

The bark statement must read as follows:

"Is all timber packaging/dunnage used in this consignment free from bark?" Yes/No

AQIS will accept bark statements on the following documents:

- Packing declaration
- Packing List or Invoice

AQIS ACTION IN RELATION TO TIMBER PACKAGING/DUNNAGE, ISPM 15 AND BARK STATEMENTS

No further action is required for timber packaging/dunnage concerns where:

- an acceptable timber packaging/dunnage statement is provided which indicates timber packaging has not been used; or
- an acceptable timber packaging/dunnage statement is provided which indicates timber packaging used is free from bark and ISPM 15 compliant; or
- an acceptable timber packaging/dunnage statement is provided which indicates timber packaging used is free from bark and has been treated offshore by an AQIS approved method;

In all other instances, consignments will be directed for inspection and/or treatment.

AQIS-APPROVED TREATMENTS FOR TIMBER PACKAGING AND DUNNAGE

Where timber packaging and/or dunnage has been declared and is neither ISPM 15 compliant nor treated by an approved offshore method, AQIS-approved treatments can be determined through the Import Conditions Database (ICON) case for 'Timber Packaging and Dunnage'.

14 NON-COMMODITY CONCERNS (SOURCE/DESTINATION)

UNPACK DESTINATION - RURAL/FRINGE RURAL AREA

All containerised cargo destined for unpack in a non-metropolitan area is subject to a rural tailgate inspection prior to delivery unless it is to be unpacked at a premises holding a rural tailgate exemption. A list of postcodes designated as metropolitan, fringe rural and rural is at Attachment B.

AQIS will accept rural/fringe rural tailgate exemptions on the following documents:

- AQIS Rural Tailgate Exemption Letter;
- AQIS endorsed copy of the rural tailgate exemption application.

AQIS ACTION IN RELATION TO FRINGE RURAL STATEMENTS

Where a consignment is to be unpacked at a non-metropolitan premises which has not been granted a rural tailgate exemption, the container(s) is to be directed for rural tailgate inspection prior to delivery.

GIANT AFRICAN SNAIL (GAS) CARGO

All cargo originating from countries on the AQIS Giant African Snail (GAS) Target Country List must be fumigated with methyl bromide at the GAS rate (128g/m³ for 24 hours at 21°C) or certified free of GAS by the Competent Authority in the country of export.

AQIS will accept evidence of GAS rate fumigation on the following documents:

- Phytosanitary Certificate; and
- Treatment Certificate (methyl bromide fumigation only)

AQIS will accept a statement by the Competent Authority of freedom from GAS on the following documents:

- Phytosanitary Certificate

Note: These requirements are in addition to the mandatory external inspection of cargo containers from these countries prior to them leaving the wharf.

AQIS ACTION IN RELATION TO CARGO ARRIVING FROM GAS COUNTRIES

Containerised cargo originating from countries on the AQIS GAS Target Country List not meeting these requirements will be directed for either inspection or onshore fumigation at GAS rate.

Break bulk cargo imported from countries on the AQIS GAS Target Country List are managed through the same process as cargo containers imported from these countries.

15 REPORTING

PREVIOUSLY ACCEPTED STATEMENTS

Where the application of this policy would prevent a previously acceptable statement from being accepted, the AQIS Officer is to consult their supervisor prior to contacting the Entry Management Unit for clarification.

16 MONITORING

NEW STATEMENTS

When a new statement is created, it is to be reviewed against and incorporated into this policy by Import Clearance – Canberra to ensure the requirements of the policy can continue to be met.

PERIODIC REVIEW

This Policy will be reviewed by Import Clearance – Canberra on a two yearly basis to ensure it remains fit for purpose.

17 OTHER CONSIDERATIONS

MINIMUM DOCUMENT REQUIREMENTS

Each statement must be made on a document that complies with the 'Minimum Document Requirements Policy'. Examples of acceptable documentation can also be found on the AQIS website.

Co-REGULATION IMPORT SCHEMES

This policy document should be read in conjunction with the following Co-regulation Schemes:

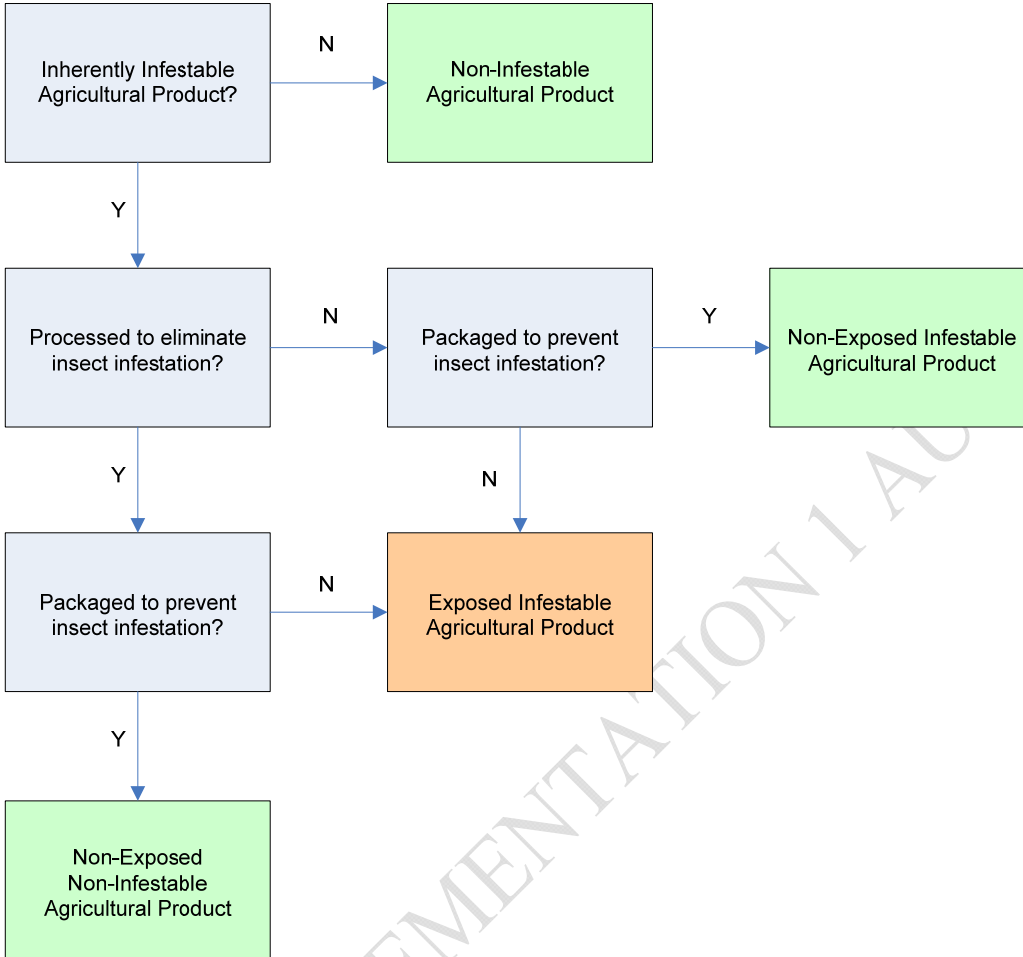
- Broker Accreditation Schemes for Non-Commodity concerns
- Automatic Entry Processing (AEP) for Commodities Scheme
- Empty Container Scheme

FOR IMPLEMENTATION 1 AUGUST 2009

ATTACHMENTS

ATTACHMENT A – EXPOSED INFESTABLE AGRICULTURAL PRODUCTS DECISION TREE

[BACK TO DEFINITIONS](#)



FOR IMPLEMENTATION 1 AUGUST 2009

ATTACHMENT B – METROPOLITAN, FRINGE RURAL AND RURAL POSTCODES[BACK TO DEFINITIONS](#)**POSTCODES FOR THE AUSTRALIAN CAPITAL TERRITORY**

All postcodes within the Australian Capital Territory are deemed to be rural.

POSTCODES FOR NEW SOUTH WALES**METROPOLITAN POSTCODES**

2000	2031	2062	2091	2120	2148	2191	2220	2297	2564
2004	2032	2063	2092	2121	2150	2192	2221	2298	2565
2005	2033	2064	2093	2122	2151	2193	2222	2299	2566
2006	2034	2065	2094	2123	2152	2194	2223	2300	2567
2007	2035	2066	2095	2124	2153	2195	2224	2302	2568
2008	2036	2067	2096	2125	2154	2196	2225	2303	2745
2009	2037	2068	2097	2126	2155	2197	2226	2304	2746
2010	2038	2069	2099	2127	2156	2198	2227	2305	2747
2011	2039	2070	2100	2128	2157	2199	2228	2306	2748
2012	2040	2071	2101	2129	2158	2200	2229	2307	2749
2013	2041	2072	2102	2130	2159	2201	2230	2308	2750
2014	2042	2073	2103	2131	2160	2202	2231	2309	2751
2015	2043	2074	2104	2132	2161	2203	2232	2310	2755
2016	2044	2075	2105	2133	2162	2204	2233	2314	2759
2017	2045	2076	2106	2134	2163	2205	2234	2500	2760
2018	2046	2077	2107	2135	2164	2206	2280	2502	2761
2019	2047	2079	2108	2136	2165	2207	2281	2505	2762
2020	2048	2080	2109	2137	2166	2208	2282	2506	2763
2021	2049	2081	2110	2138	2167	2209	2284	2515	2764
2022	2050	2082	2111	2139	2168	2210	2285	2516	2765
2023	2051	2083	2112	2140	2169	2211	2289	2517	2766
2024	2052	2084	2113	2141	2170	2212	2290	2518	2767
2025	2056	2085	2114	2142	2171	2213	2291	2519	2768
2026	2057	2086	2115	2143	2173	2214	2292	2520	2770
2027	2058	2087	2116	2144	2174	2216	2293	2558	
2028	2059	2088	2117	2145	2176	2217	2294	2559	
2029	2060	2089	2118	2146	2177	2218	2295	2560	
2030	2061	2090	2119	2147	2190	2219	2296	2563	

FRINGE RURAL POSTCODES

2250	2258	2263	2283	2324	2526	2753
2251	2259	2264	2286	2485	2527	2754
2252	2260	2265	2287	2486	2530	2756
2256	2261	2267	2315	2508	2570	2775
2257	2262	2278	2322	2525	2571	

Postcodes not listed above are deemed to be rural.

POSTCODES FOR THE NORTHERN TERRITORY**METROPOLITAN POSTCODES**

0800 0810 0812

FRINGE RURAL POSTCODES

0820 0828 0830

Postcodes not listed above are deemed to be rural.

POSTCODES FOR QUEENSLAND**METROPOLITAN POSTCODES**

4000	4022	4060	4102	4117	4153	4172	4222	4551
4005	4029	4061	4103	4118	4154	4173	4224	4556
4006	4030	4064	4104	4119	4155	4174	4225	4557
4007	4031	4065	4105	4120	4156	4178	4226	4558
4008	4032	4066	4106	4121	4157	4179	4227	4564
4009	4034	4067	4107	4122	4158	4205	4229	4567
4010	4035	4068	4108	4123	4159	4212	4230	4572
4011	4036	4072	4109	4127	4160	4214	4231	4573
4012	4037	4073	4110	4128	4161	4215	4301	4575
4013	4051	4074	4111	4129	4163	4216	4305	4810
4014	4052	4075	4112	4130	4164	4217	4501	4812
4017	4053	4076	4113	4131	4165	4218	4502	4813
4019	4054	4077	4114	4132	4169	4219	4507	4814
4020	4055	4078	4115	4151	4170	4220	4508	4870
4021	4059	4101	4116	4152	4171	4221	4511	

FRINGE RURAL POSTCODES

4069	4133	4210	4300	4503	4510	4555	4817
4070	4207	4211	4303	4504	4550	4565	4818
4124	4208	4223	4304	4505	4553	4566	
4125	4209	4280	4500	4506	4554	4811	

Postcodes not listed are deemed to be rural.

POSTCODES FOR SOUTH AUSTRALIA**METROPOLITAN POSTCODES**

5000	5013	5025	5038	5050	5070	5086	5098	5159
5002	5014	5026	5039	5051	5071	5087	5106	5160
5003	5015	5027	5040	5052	5072	5088	5107	5161
5004	5016	5028	5041	5061	5073	5089	5108	5164
5005	5017	5029	5042	5062	5074	5090	5109	5165
5006	5018	5030	5043	5063	5075	5091	5110	5166
5007	5019	5031	5044	5064	5076	5092	5111	5167
5008	5020	5032	5045	5065	5081	5093	5112	5950
5009	5021	5033	5046	5066	5082	5094	5113	
5010	5022	5034	5047	5067	5083	5095	5125	
5011	5023	5035	5048	5068	5084	5096	5126	
5012	5024	5037	5049	5069	5085	5097	5158	

FRINGE RURAL POSTCODES

5152

Postcodes not listed are deemed to be rural.

POSTCODES FOR TASMANIA**METROPOLITAN POSTCODES**

7000	7002	7005	7007	7009	7015	7248	7250	7320
7001	7004	7006	7008	7010	7018	7249	7310	

FRINGE RURAL POSTCODES

7011 7253 7170

Postcodes not listed are deemed to be rural.

POSTCODES FOR VICTORIA**METROPOLITAN POSTCODES**

3000	3025	3046	3070	3102	3130	3152	3178	3196
3002	3026	3047	3071	3103	3131	3153	3179	3197
3003	3027	3048	3072	3104	3132	3155	3180	3198
3004	3028	3049	3073	3105	3133	3161	3181	3199
3005	3031	3051	3074	3106	3135	3162	3182	3202
3006	3032	3052	3075	3107	3136	3163	3183	3204
3008	3033	3053	3078	3108	3138	3165	3184	3205
3011	3034	3054	3079	3109	3141	3166	3185	3206
3012	3036	3055	3081	3111	3142	3167	3186	3207
3013	3037	3056	3082	3121	3143	3168	3187	3214
3015	3038	3057	3083	3122	3144	3169	3188	3215
3016	3039	3058	3084	3123	3145	3170	3189	3216
3018	3040	3060	3085	3124	3146	3171	3190	3217
3019	3041	3061	3087	3125	3147	3172	3191	3218
3020	3042	3065	3088	3126	3148	3173	3192	3219
3021	3043	3066	3093	3127	3149	3174	3193	3220
3022	3044	3067	3094	3128	3150	3175	3194	
3023	3045	3068	3101	3129	3151	3177	3195	

FRINGE RURAL POSTCODES

3029	3064	3090	3134	3156	3212	3802	3806	3931	3977
3030	3076	3095	3137	3200	3221	3803	3910	3975	
3062	3089	3116	3140	3201	3765	3805	3930	3976	

Postcodes not listed above are deemed to be rural.

POSTCODES FOR WESTERN AUSTRALIA**METROPOLITAN POSTCODES**

6000	6009	6017	6024	6051	6062	6101	6108	6153	6160
6003	6010	6018	6025	6052	6063	6102	6147	6154	6162
6004	6011	6019	6026	6053	6064	6103	6148	6155	6163
6005	6012	6020	6027	6054	6066	6104	6149	6156	6168
6006	6014	6021	6028	6059	6067	6105	6150	6157	6169
6007	6015	6022	6030	6060	6090	6106	6151	6158	6172
6008	6016	6023	6050	6061	6100	6107	6152	6159	

FRINGE RURAL POSTCODES

6031	6056	6058	6068	6076	6110	6112	6165	6167	
6055	6057	6065	6069	6109	6111	6164	6166	6170	

Postcodes not listed are deemed to be rural.

NOTE: Any changes made to delivery postcodes in this document must be reflected in changes to the delivery postcodes document posted on the AQIS website as it is used by third party software providers.

VERSION HISTORY

Version	Description and reason	Author	Date
0.1-1.1	Document development and finalisation	Entry Management Project Team, Sea Cargo Unit, Industry Partnerships Unit	Aug 07- Mar 09

FOR IMPLEMENTATION 1 AUGUST 2009